

## Caernarfon Walking Hotels

Discover some of the finest walking holidays in the UK & Ireland with Best Loved Hotels. The UK & Ireland is teeming with mountains, glens, woods, forests, lakes, coastlines, paths, track-ways and lookout points spread out across an ancient landscape littered with historical monuments. Discover it all right here at Caernarfon Walking Hotels.

---

### Walking Hotels in Caernarfon (7 RESULTS)

#### Bodysgallen Hall and Spa

<http://www.bestloved.com/hotels/hotel-bodysgallen-hall-and-spa-in-llandudno-conwy-wales-uk.php>



*Address:* Llandudno, Conwy, LL30 1RS, Wales, UK

*Location:* From Chester, take the A55 to junction 19, then follow the A470 toward Llandudno for two miles. The hotel is on the right.

*Contact:* Call: 0845 012 1593 (UK only) Phone: +44(0)1492 584466 Fax: +44(0)1492 582519

***Jewel-like gardens and a sumptuous spa vie for attention with spectacular views***

*Room rates:*

16 Doubles/Twins: 175 - 395

16 Cottage Suites: 225 - 385

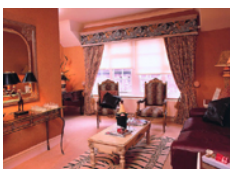
1 Four-posters: 245

1 Suite: 395

All prices in: GB Pounds Includes service and VAT

#### Castle Hotel

<http://www.bestloved.com/hotels/hotel-castle-hotel-in-conwy-conwy-wales-uk.php>



*Address:* High Street, Conwy, Conwy, LL32 8DB, Wales, UK

*Location:* Exit the A55 eastbound at J17 or J18 westbound for Conwy, using the castle as a landmark. In Conwy's one-way system, pass through the town walls; High Street is the main road on the right, adjacent to the quay.

*Contact:* Call: 0845 012 1592 (UK only) Phone: +44(0)1492 582 800 Fax: +44(0)1492 582 300

***A palace in its own right in the shadow of Conwy Castle***

*Room rates:*

4 Singles: 75 - 90

19 Doubles/Twins: 105 - 155

2 Family Rooms: 125 - 165

2 Deluxe Rooms: 155 - 185

1 Suite: 250 - 320

All prices in: GB Pounds Includes full breakfast and VAT

## Ffarm Country House

<http://www.bestloved.com/hotels/hotel-ffarm-country-house-in-abergele-conwy-wales-uk.php>



**Address:** Betws-yn-Rhos, Abergele, Conwy, LL22 8AR, Wales, UK

**Location:** Leave A55 at junction 24, go to Abergele town centre, turn left at traffic lights on to A548. Approximately 3 miles down the road turn right on the B5381 signposted Betws-yn-Rhos.

**Contact:** Call: 0845 012 1758 (UK only) Phone: +44(0)1492 680448 Fax: +44(0)1492 680448

***Top notch everything in a lovely private country house***

**Room rates:**

7 Doubles: 90 - 120

All prices in: GB Pounds Includes full breakfast and VAT

## Hotel Portmeirion

<http://www.bestloved.com/hotels/hotel-hotel-portmeirion-in-portmeirion-gwynedd-wales-uk.php>



**Address:** Portmeirion, Gwynedd, LL48 6ET, Wales, UK

**Location:** From the A487 (toward Porthmadog), take a left at Penrhyndeudraeth, signed for Portmeirion. The hotel is 1.5 miles along.

**Contact:** Call: 0845 012 1672 (UK only) Phone: +44(0)1766 770000 Fax: +44(0)1766 770300

***Sybaritic comfort and cutting-edge style in a romantic seaside idyll***

**Room rates:**

Single Occupancy: 162 - 227

7 Doubles/Twins: 199 - 264

4 Suites: 214 - 264

All prices in: GB Pounds Includes full breakfast and VAT

## Maes-y-Neuadd

<http://www.bestloved.com/hotels/hotel-maes-y-neuadd-in-harlech-gwynedd-wales-uk.php>



**Address:** Talsarnau, Harlech, Gwynedd, LL47 6YA , Wales, UK

**Location:** Located 1 ½ miles off the B4573, 3 ½ miles north of Harlech. Watch for the hotel's sign on the corner of the lane.

**Contact:** Call: 0845 012 1673 (UK only) Phone: +44(0)1766 780200 Fax: +44(0)1766 780211

***An elegant country house with sea and mountain views***

**Room rates:**

13 Doubles/Twins: 98 - 190

1 Four-poster: 111 - 130

1 Suite: 124 - 130

All prices in: GB Pounds Includes full breakfast and VAT

## Plas Maenan Hotel

<http://www.bestloved.com/hotels/hotel-plas-maenan-hotel-in-llanwryst-conwy-wales-uk.php>



**Address:** Conwy Valley, Llanwryst, Conwy, LL26 0YR, Wales, UK

**Location:** Take the A55 Expressway to the Llandudno Junction exit and follow the A470 towards Betws-y-Coed for approximately 6 miles, until you see the sign for Maenan village. Plas Maenan Hotel is on the left, opposite Dolgarrog Station.

**Contact:** Call: 0845 012 1594 (UK only) Phone: +44(0)1492 660232 Fax: +44(0)1492 660363

***Panoramic views and all-embracing ambience in the Conwy Valley***

**Room rates:**

4 Doubles: 90

4 Suites: 100 - 130

All prices in: GB Pounds Includes full breakfast and VAT

## **Ty'n Rhos Country Hotel**

<http://www.bestloved.com/hotels/hotel-ty-n-rhos-country-hotel-in-caernarfon-gwynedd-wales-uk.php>



*Address:* Seion, Llanddeiniolen, Caernarfon, Gwynedd, LL55 3AE, Wales, UK

*Location:* Take the B4366 (signposted Bethel) from Caernarfon. Pass through Bethel and after passing the Gors Bach Inn take the first left signposted Seion. Ty'n Rhos is on the left.

*Contact:* Call: 0845 012 1510 (UK only) Phone: +44(0)1248 670489 Fax: +44(0)1248 671772

***An ancient farm turned into a fine country house and restaurant***

*Room rates:*

1 Single Occupancy: 75

9 Doubles/Twins: 98 - 130

All prices in: GB Pounds Includes full breakfast and VAT