

## Conwy Hotels with Log Fires

Whether you are a fan of Nat King Cole and roasting chestnuts or not, you'll probably still appreciate a blazing fire on a winter's evening and a glass of something warming to keep your spirits up. These Best Loved Conwy Hotels with Log Fires are big fans too and their version of an open fire range from a comfortable inn's hearth to the gaping maw and burning blaze of a full-blown castle's stone fireplace.

---

### Hotels with Log Fires in Conwy, Wales, UK (5 RESULTS)

#### **Bodysgallen Hall and Spa**

<http://www.bestloved.com/hotels/hotel-bodysgallen-hall-and-spa-in-llandudno-conwy-wales-uk.php>



*Address:* Llandudno, Conwy, LL30 1RS, Wales, UK

*Location:* From Chester, take the A55 to junction 19, then follow the A470 toward Llandudno for two miles. The hotel is on the right.

*Contact:* Call: 0845 012 1593 (UK only) Phone: +44(0)1492 584466 Fax: +44(0)1492 582519

***Jewel-like gardens and a sumptuous spa vie for attention with spectacular views***

*Room rates:*

16 Doubles/Twins: 175 - 395

16 Cottage Suites: 225 - 385

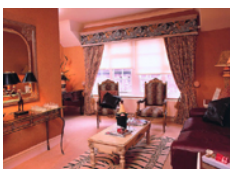
1 Four-posters: 245

1 Suite: 395

All prices in: GB Pounds Includes service and VAT

#### **Castle Hotel**

<http://www.bestloved.com/hotels/hotel-castle-hotel-in-conwy-conwy-wales-uk.php>



*Address:* High Street, Conwy, Conwy, LL32 8DB, Wales, UK

*Location:* Exit the A55 eastbound at J17 or J18 westbound for Conwy, using the castle as a landmark. In Conwy's one-way system, pass through the town walls; High Street is the main road on the right, adjacent to the quay.

*Contact:* Call: 0845 012 1592 (UK only) Phone: +44(0)1492 582 800 Fax: +44(0)1492 582 300

***A palace in its own right in the shadow of Conwy Castle***

*Room rates:*

4 Singles: 75 - 90

19 Doubles/Twins: 105 - 155

2 Family Rooms: 125 - 165

2 Deluxe Rooms: 155 - 185

1 Suite: 250 - 320

All prices in: GB Pounds Includes full breakfast and VAT

## Ffarm Country House

<http://www.bestloved.com/hotels/hotel-ffarm-country-house-in-abergele-conwy-wales-uk.php>



*Address:* Betws-yn-Rhos, Abergele, Conwy, LL22 8AR, Wales, UK

*Location:* Leave A55 at junction 24, go to Abergele town centre, turn left at traffic lights on to A548. Approximately 3 miles down the road turn right on the B5381 signposted Betws-yn-Rhos.

*Contact:* Call: 0845 012 1758 (UK only) Phone: +44(0)1492 680448 Fax: +44(0)1492 680448

***Top notch everything in a lovely private country house***

*Room rates:*

7 Doubles: 90 - 120

All prices in: GB Pounds Includes full breakfast and VAT

## Osborne House

<http://www.bestloved.com/hotels/hotel-osborne-house-in-llandudno-conwy-wales-uk.php>



*Address:* Promenade, Llandudno, Conwy, LL30 2LP, Wales, UK

*Location:* Exit the A55 at Junction 19. Follow signs to Llandudno, then the Promenade. Osborne House is at the end of the Promenade and opposite the entrance to the pier.

*Contact:* Call: 0845 012 1595 (UK only) Phone: +44(0)1492 860330 Fax: +44(0)1492 860791

***Gloriously romantic and ludicrously spacious, with breathtaking sea views***

*Room rates:*

6 Suites: 150 - 250

All prices in: GB Pounds Includes continental breakfast and VAT

## Plas Maenan Hotel

<http://www.bestloved.com/hotels/hotel-plas-maenan-hotel-in-llanwryst-conwy-wales-uk.php>



*Address:* Conwy Valley, Llanwryst, Conwy, LL26 0YR, Wales, UK

*Location:* Take the A55 Expressway to the Llandudno Junction exit and follow the A470 towards Betws-y-Coed for approximately 6 miles, until you see the sign for Maenan village. Plas Maenan Hotel is on the left, opposite Dolgarrog Station.

*Contact:* Call: 0845 012 1594 (UK only) Phone: +44(0)1492 660232 Fax: +44(0)1492 660363

***Panoramic views and all-embracing ambience in the Conwy Valley***

*Room rates:*

4 Doubles: 90

4 Suites: 100 - 130

All prices in: GB Pounds Includes full breakfast and VAT