

## Caernarfon Hotels with Four Poster Beds

Every single one of these hotels offers rooms with four-poster beds. The four-poster bed was originally designed to keep the draught off its slumbering inhabitants and the insects and dirt off their heads. Since medieval times are long past, we no longer have to worry about things falling on our heads as we tend to plaster our ceilings. All the same, the four-poster bed has remained popular. Test out the bed-sheets at each of these fabulous Caernarfon Hotels with Four Poster Beds and marvel at the many weird wonderful and downright comfortable four-poster beds within them.

---

### Hotels with Four Poster Beds in Caernarfon (6 RESULTS)

#### Bodysgallen Hall and Spa

<http://www.bestloved.com/hotels/hotel-bodysgallen-hall-and-spa-in-llandudno-conwy-wales-uk.php>



*Address:* Llandudno, Conwy, LL30 1RS, Wales, UK

*Location:* From Chester, take the A55 to junction 19, then follow the A470 toward Llandudno for two miles. The hotel is on the right.

*Contact:* Call: 0845 012 1593 (UK only) Phone: +44(0)1492 584466 Fax: +44(0)1492 582519

***Jewel-like gardens and a sumptuous spa vie for attention with spectacular views***

*Room rates:*

16 Doubles/Twins: 175 - 395

16 Cottage Suites: 225 - 385

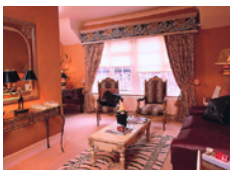
1 Four-posters: 245

1 Suite: 395

All prices in: GB Pounds Includes service and VAT

#### Castle Hotel

<http://www.bestloved.com/hotels/hotel-castle-hotel-in-conwy-conwy-wales-uk.php>



*Address:* High Street, Conwy, Conwy, LL32 8DB, Wales, UK

*Location:* Exit the A55 eastbound at J17 or J18 westbound for Conwy, using the castle as a landmark. In Conwy's one-way system, pass through the town walls; High Street is the main road on the right, adjacent to the quay.

*Contact:* Call: 0845 012 1592 (UK only) Phone: +44(0)1492 582 800 Fax: +44(0)1492 582 300

***A palace in its own right in the shadow of Conwy Castle***

*Room rates:*

4 Singles: 75 - 90

19 Doubles/Twins: 105 - 155

2 Family Rooms: 125 - 165

2 Deluxe Rooms: 155 - 185

1 Suite: 250 - 320

All prices in: GB Pounds Includes full breakfast and VAT

## Ffarm Country House

<http://www.bestloved.com/hotels/hotel-ffarm-country-house-in-abergele-conwy-wales-uk.php>



**Address:** Betws-yn-Rhos, Abergele, Conwy, LL22 8AR, Wales, UK

**Location:** Leave A55 at junction 24, go to Abergele town centre, turn left at traffic lights on to A548. Approximately 3 miles down the road turn right on the B5381 signposted Betws-yn-Rhos.

**Contact:** Call: 0845 012 1758 (UK only) Phone: +44(0)1492 680448 Fax: +44(0)1492 680448

***Top notch everything in a lovely private country house***

**Room rates:**

7 Doubles: 90 - 120

All prices in: GB Pounds Includes full breakfast and VAT

## Maes-y-Neuadd

<http://www.bestloved.com/hotels/hotel-maes-y-neuadd-in-harlech-gwynedd-wales-uk.php>



**Address:** Talsarnau, Harlech, Gwynedd, LL47 6YA , Wales, UK

**Location:** Located 1 ½ miles off the B4573, 3 ½ miles north of Harlech. Watch for the hotel's sign on the corner of the lane.

**Contact:** Call: 0845 012 1673 (UK only) Phone: +44(0)1766 780200 Fax: +44(0)1766 780211

***An elegant country house with sea and mountain views***

**Room rates:**

13 Doubles/Twins: 98 - 190

1 Four-poster: 111 - 130

1 Suite: 124 - 130

All prices in: GB Pounds Includes full breakfast and VAT

## Plas Maenan Hotel

<http://www.bestloved.com/hotels/hotel-plas-maenan-hotel-in-llanwryst-conwy-wales-uk.php>



**Address:** Conwy Valley, Llanwryst, Conwy, LL26 0YR, Wales, UK

**Location:** Take the A55 Expressway to the Llandudno Junction exit and follow the A470 towards Betws-y-Coed for approximately 6 miles, until you see the sign for Maenan village. Plas Maenan Hotel is on the left, opposite Dolgarrog Station.

**Contact:** Call: 0845 012 1594 (UK only) Phone: +44(0)1492 660232 Fax: +44(0)1492 660363

***Panoramic views and all-embracing ambience in the Conwy Valley***

**Room rates:**

4 Doubles: 90

4 Suites: 100 - 130

All prices in: GB Pounds Includes full breakfast and VAT

## Tan-y-Foel Country House

<http://www.bestloved.com/hotels/hotel-tan-y-foel-country-house-in-betws-y-coed-conwy-wales-uk.php>



**Address:** Capel Garmon, Betws-y-Coed, Conwy, LL26 0RE , Wales, UK

**Location:** From the A55, take the A470 to Llanrwst; keep on the A470 through Llanrwst, and after two miles take the turning signposted 'Capel Garmon/Nebo'. Tan-y-Foel is on the left after 1.5 miles.

**Contact:** Call: 0845 012 1651 (UK only) Phone: +44(0)1690 710507 Fax: +44(0)1690 710681

***An oasis of tranquillity and culinary excellence in Snowdonia***

**Room rates:**

Single Occupancy: 110 - 155

4 Doubles/Twins: 149 - 200

2 Four-posters: 164

All prices in: GB Pounds Includes full breakfast and VAT